

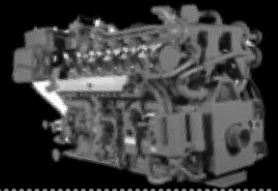


Photo
from
Eastern
Sanitary
Landfill

IPD Products for Waukesha® VHP SERIES 7042/7044 SPARK IGNITED ENGINES

The Standard for Quality, Innovation, Service and Support Since 1955

IPD PARTS FOR WAUKESHA® 7042/7044



IPD provides cost effective quality without risk to engine life or performance.

IPD has a long and successful history manufacturing spark-ignited gas engine overhaul kits and components. Listed below are some highlights of IPD's product line for Waukesha VHP-Series engines.

IPD Quality Pistons & Rings

IPD has a long history with aluminum pistons. From engineering to design to development and manufacturing, IPD is focused on your business success. IPD's Waukesha 7042/7044 pistons are engineered to perform. Special Ni-resist austenitic material is tightly bonded metalically to the piston body to counteract wear in the top ring groove. IPD's rings work together to improve wear resistance, provide better oil control, and reduce blow-by of exhaust gases. The top compression ring features a special tapered upper profile with lower offset barrel shape for better ring-to-sleeve wall contact.



IPD Quality Cylinder Liners

As per IPD's rigid quality standards, IPD's Cylinder Liners are engineered to precise tolerances ensuring high quality and performance. A special bainitic iron/chromium alloy material is used that includes a matrix of carbon, silicon, molybdenum, and nickel to provide tensile strength exceeding 55,000 PSI.



IPD Quality Valvetrain

IPD valvetrain components are preferred by discriminating machine shops all around the world. IPD's valvetrain components for Waukesha applications are engineered to rigid IPD specifications, and specifically for spark ignited engines.

- Valves made of high grade alloy steel, with added Chromium and for corrosion resistance. Special austenitic nickel chromium super alloy material used for specific applications.
- Valve Seats specially engineered with a Stellite® cobalt base, cobalt-chromium alloy material for enhanced durability and wear resistance.
- Valve Guides made of superior hardness material to ensure long life and reliable performance
- Other valvetrain parts available include Valve Overhaul Kits, Rotator Assemblies, Springs, Retainers & Locks.



IPD Quality Parts

IPD offers a wide range of very high quality components for spark-ignited gas engines. From IPD's cylinder kits (and components), to valve kits (and components), to engine bearings and bushings, to gasket sets...IPD provides quality assurance for your business requirements. Call today and ask for a quote, let IPD help you to improve your bottom line.



IPD PARTS LIST FOR WAUKESHA VHP-SERIES (7042/7044) ENGINES

DESCRIPTION	PART #	Engine*				COMMENT
		7042GSI	7042G	7042GL	7044GSI Series 4	
CYLINDER KITS (includes liner, piston, rings, pin, retainers, & liner seals)						
Cylinder Kit	8.0:1 CR	G932287	12			Bainitic Hard Liner
	10.5:1 CR	G932200		12		
	10.5:1 CR	G932275			12	Bainitic Hard Liner
	8.0:1 CR	G932282				12 Bainitic Hard Liner
CYLINDER KIT COMPONENTS						
Piston	8.0:1 CR	205504P	12			4-Ring
	10.5:1 CR	205504Z		12		4-Ring
	10.5:1 CR	205504N			12	3-Ring
	8.0:1 CR	205604S				12 3-Ring
Ring Set		G907147	12	12		4-Ring
		G907238			12	3-Ring
		G907241				12 3-Ring
Piston Pin		10006	12	12	12	12
Piston Pin Retainers		44999C	24	24	24	24
Liner		205130R	12		12	12 Bainitic hard liner
		205130S		12		
Liner O-Ring	Black	119397G	24	24	24	24 Upper & center groove (water side)
	Red	119397E	12	12	12	12 Lower groove (oil side)
CYLINDER HEAD KITS & COMPONENTS						
Single Cylinder Overhaul Kit		G9361006			12	For wide bridged cylinder heads. Kits include valves, guides, inserts & seals. Does not include valve locks.
<i>Kit Includes:</i>						
Intake Valve		204236K			2	
Exhaust Valve		204436G			2	
Valve Guide - Exhaust		204109T			2	
Valve Guide - Intake		204209N			2	
Valve Seat, Intake		176352P			2	
Valve Seat, Exhaust		176352R			2	
Valve Guide Seal - Exhaust		176450G			2	
Valve Guide Seal - Intake		176450H			2	

* Engine Suffix Guide: G=Naturally Aspirated, GSI=Turbocharged, intercooled, GL=Turbocharged, intercooled, lean burn

* Parts listing (subject to change) provided for reference purposes only, not to be used as a catalog.

IPD PARTS LIST FOR WAUKESHA VHP-SERIES (7042/7044) ENGINES

DESCRIPTION	PART #	Engine*				COMMENT
		7042GSI	7042G	7042GL	7044GSI Series 4	
CYLINDER HEAD KITS & COMPONENTS (Continued)						
Single Cylinder Overhaul Kit	G9361016	12	12			For narrow bridged cylinder heads. Kits include valves, guides, inserts & seals. Does not include valve locks.
<i>Kit Includes:</i>						
Intake Valve	204236K	2	2			
Exhaust Valve	204436E	2	2			Inconel
Valve Guide - Exhaust	204109T	2	2			
Valve Guide - Intake	204209N	2	2			
Valve Seat, Intake & Exhaust	176352K	4	4			
Valve Guide Seal - Exhaust	176450G	2	2			
Valve Guide Seal - Intake	214229	2	2			
Single Cylinder Overhaul Kit	G9361017	12	12			For wide bridged cylinder heads. Kits include valves, guides, inserts & seals. Does not include valve locks.
<i>Kit Includes:</i>						
Intake Valve	204236K	2	2			
Exhaust Valve	204436E	2	2			Inconel
Valve Guide - Exhaust	204109T	2	2			
Valve Guide - Intake	204209N	2	2			
Valve Seat, Intake & Exhaust	176352P	4	4			
Valve Guide Seal - Exhaust	176450G	2	2			
Valve Guide Seal - Intake	214229	2	2			
Single Cylinder Overhaul Kit	G9361044				12	Does not include exhaust seats
<i>Kit Includes:</i>						
Valve, Exhaust	204436K				2	
Valve, Intake	204436A				2	
Seat, Valve Intake	211801J				2	
Valve Guide, Intake	204209E				2	
Valve Guide, Exhaust	204209F				2	
Valve Guide Seal - Intake	214229				2	
Valve Guide Seal - Exhaust	176450G				2	
Valve Rotator Assem.	214230				4	
Valve Lock	73629C				8	

* Engine Suffix Guide: G=Naturally Aspirated, GSI=Turbocharged, intercooled, GL=Turbocharged, intercooled, lean burn

* Parts listing (subject to change) provided for reference purposes only, not to be used as a catalog.

IPD PARTS LIST FOR WAUKESHA VHP-SERIES (7042/7044) ENGINES

DESCRIPTION	PART #	Engine*				COMMENT	
		7042GSI	7042G	7042GL	7044GSI Series 4		
CYLINDER HEAD PARTS - MISC.							
Valve Seat, Exhaust	211802B				24	Sold separately	
Valve Spring - Intake	Inner	204035A	24	24	24		
	Outer	204135A	24	24	24		
	Inner	204235B				24	2 white stripes
	Outer	204335B				24	2 white stripes
Valve Spring - Exhaust	Inner	204035	24	24	24		
	Outer	204135	24	24	24	Black	
	Inner	204235C				24	2 blues stripes
	Outer	204335C				24	2 blues stripes
Valve Spring Washer (seat)	153883A	96	96	96			
Valve Rotator Assy.	214230				48		
Retainer - Valve Spring	153884D	48	48	48			
Valve Lock	73629C				96		
	73629A	96	96	96		Not included in Valve Kits	
ENGINE BEARINGS							
Connecting Rod Bearing Std.	A205210	12	12	12	12	Latest version (rod series A205507E & C205707)	
	A205210B	12	12	12		Mid version (rod series A205407H)	
	A205010Z	12	12	12		Early version	
Main Bearing Set Std.	G918344	1	1	1	1	T-drill	
	G918328	1	1	1	1	Angle drill, previous #G918332	
Connecting Rod Bushing	47108F	24	24	24	24		
Camshaft Bushing Set	9277	1	1	1	1		
<i>Kit Includes:</i>							
Bushing, Front Cam	200027	2	2	2	2	Sold in halves- 2 per journal	
Bushing, Ctr./Int./Rear Cam	200050	12	12	12	12	Sold in halves- 2 per journal	
Camshaft Thrust	153032	2	2	2	2		

* Engine Suffix Guide: G=Naturally Aspirated, GSI=Turbocharged, intercooled, GL=Turbocharged, intercooled, lean burn

* Parts listing (subject to change) provided for reference purposes only, not to be used as a catalog.

IPD PARTS LIST FOR WAUKESHA VHP-SERIES (7042/7044) ENGINES

DESCRIPTION	PART #	Engine*				COMMENT
		7042GSI	7042G	7042GL	7044GSI Series 4	
GASKET SETS & GASKETS						
Head Gasket Set - Single	G977049	12	12			Without valve stem seals
	G977046			12		Without valve stem seals
	G97768				12	
Head Gasket Set - Multiple	G979266	1	1			Without valve stem seals
	G979258			1		
Basic Gasket Set	G9001025	1	1			Lower set
	G9001033			1	1	Lower set
Top Overhaul Gasket Set	G979292				1	
Cylinder Head Gasket	205100C	12	12	12	12	Previous #205000L
Oil Pan Side Cover O-Ring	153121	12	12	12	12	
Oil Pan Side Cover O-Ring	951054E	12	12	12	12	
Rocker Cover Gasket	153894D	12	12	12		
	153994C				12	

* Engine Suffix Guide: G=Naturally Aspirated, GSI=Turbocharged, intercooled, GL=Turbocharged, intercooled, lean burn

* Parts listing (subject to change) provided for reference purposes only, not to be used as a catalog.



IPD SPARK-IGNITED GAS ENGINES MODEL SUMMARY

CATERPILLAR®

G3606 / G3608 / G3612 / G3616
G3508 / G3512 / G3516 / G3520
G3406 / G3408 / G3412
G3304 / G3306
G342 / G353 / G379 / G398 / G399

WAUKESHA®

7042 / 7044

*IPD also manufactures parts for Caterpillar®, Cummins®,
Detroit Diesel®, & Volvo® diesel engine applications.*

IPD brand quality products distributed by:



IPD®

23231 Normandie Ave
Torrance, California 90501 USA
+1 (310) 530-1900
+1 (310) 530-2708 Fax
+1 (310) 602-5399 Sales
www.ipdparts.com
sales@ipdparts.com

All manufacturers' names, numbers, symbols & descriptions are for reference only. It is not implied that any part is the product of the manufacturer. Caterpillar®, Cummins®, Detroit®, Waukesha® & Volvo® are trademarks of their respective owners.