



## IPD TECHNICAL BULLETIN

January 2017

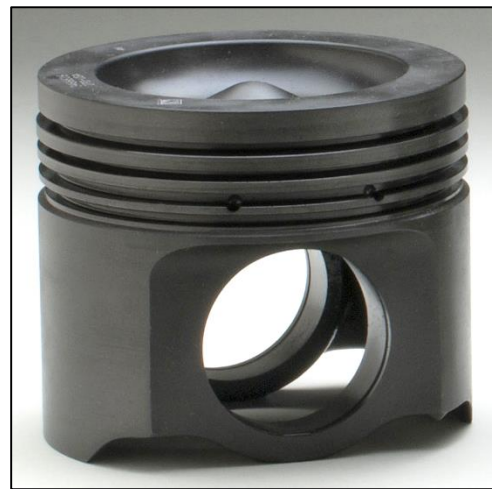
IPDTB-0030

### *IPD Technical Bulletin:* **Caterpillar® C27 Pistons**

Please be advised that Caterpillar discontinued older style one-piece pistons for C27 applications, and now only offers the updated/stronger friction welded design.



*Previous C27 1pc piston design*



*Updated C27 welded piston design*

#### IPD Parts Program Highlights

- IPD exclusively offers updated **IPDSteel®** welded pistons for C27 applications in the aftermarket
- **IPDSteel** pistons for C27 engines are the only “correct specification” alternative to dealer parts
- All **IPDSteel** pistons are manufactured at IPD headquarters in Torrance, California (USA)

Note the following differences between 1pc and welded steel piston designs:

- Welded steel pistons are typically specified for very high cylinder pressures (approx. 3,480 PSI), while 1pc steel designs typically operate reliably in the 2,610 to 3,190 PSI range
- Under very high peak cylinder pressure conditions, welded pistons provide critical structural strength and support in the lower ring land area, which also helps reduce oil consumption

Please reference the latest O.E. service bulletins and publications for updates and current information, or contact IPD for related information.

**Note: IPD does not recommend mixing different design piston within an engine.**

---

IPD | Torrance, CA 90501 USA | [www.ipdparts.com](http://www.ipdparts.com) | IPD is an ISO9001:2008 Certified Company

All information is believed accurate at time of printing, no guarantee is made by IPD. Please consult your service & parts manual for detailed information. All manufacturers' names, numbers, symbols and descriptions are for reference only. It is not implied that any part is the product of the manufacturer. Caterpillar®, Detroit®, Detroit Diesel®, Cummins®, Volvo®, & Waukesha® are trademarks of their respective owners.