

IPD Parts for Cummins® ISX15



In-Frame & Out-of-Frame Engine Kits
IPDSteel® Piston & Cylinder Liner Kits
Valvetrain Components
Engine Bearings
Gaskets Sets



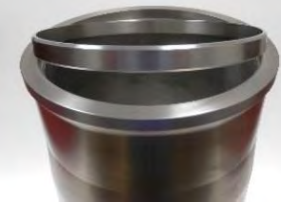
IPD engine kits for ISX15 engines feature high technology IPDSteel® 1-piece pistons (closed skirt/bushingless design) for use with APR (anti-polishing ring) cylinder liners. IPD's exclusive 1-piece oil dam plate outperforms 2-piece designs. All IPDSteel pistons are manufactured by IPD in Torrance, California (USA).

IPD's updated APR cylinder liner is induction heat treated, includes a precision honed ID for proper break-in, and has an OE style carbon scraper ring. This liner comes pre-installed with a premium design/specification 36-tab brass shim for ease of installation. Also, for a limited time, **IPD includes a special APR piston installation tool for free with each engine kit order.**

IPD engine kits include main bearings, connecting rod bearings (not provided in equivalent OE kits), and a comprehensive gasket set. IPD main bearings are packaged to ensure they arrive ready to use without risk of shipping and handling damage (unlike bulk packing). IPD connecting rod bearings are available for both sawcut and fractured type rods. IPD's gasket set component parts are made with heavy-duty OE style components, and each set includes an updated style oil bypass valve (see image, significantly different than the previous ISX valve).

Other cylinder head components available include a wide range of valvetrain parts (valves, seat/inserts, guides, springs, and locks).

IPD parts for on-highway engine applications are protected by IPD's limited **2-YEAR / UNLIMITED MILES** warranty (contact IPD to details).



IPD's special piston installation tool for APR liners provided FREE with each engine kit (a \$149 OE value) for a limited time

IPD PARTS FOR ISX15 (15L) SINGLE CAM ENGINE APPLICATIONS

DESCRIPTION	PART NUMBER	QTY.	NOTES
IN-FRAME KITS			
In-Frame Kit IPDSteel™ Piston	IF1758/04CR	1	CPL#: 3348, 3349, 3376, 3490, 3491, 3687, 3688. Must be used with sawcut connecting rods
In-Frame Kit IPDSteel™ Piston	IF1758/04FR	1	CPL#: 3348, 3349, 3376, 3490, 3491, 3687, 3688. Must be used with fractured connecting rods
In-Frame Kit IPDSteel™ Piston	IF2023/04CR	1	CPL#: 3350, 3356, 3606, 3765, 3766, 3794, 3797, 3938, 3939, 4584, 4585, 4587, 4588. Must be used with sawcut connecting rods
In-Frame Kit IPDSteel™ Piston	IF2023/04FR	1	CPL#: 3350, 3356, 3606, 3765, 3766, 3794, 3797, 3938, 3939, 4584, 4585, 4587, 4588. Must be used with fractured connecting rods
In-Frame Kit IPDSteel™ Piston	IF2080/04CR	1	CPL#: 3657, 3719, 3724, 3937, 4583, 4586. Must be used with sawcut connecting rods
In-Frame Kit IPDSteel™ Piston	IF2080/04FR	1	CPL#: 3657, 3719, 3724, 3937, 4583, 4586. Must be used with fractured connecting rods
OUT-OF-FRAME KITS			
Out-of-Frame Overhaul Kit IPDSteel™ Piston	OF1758/66CR	1	CPL#: 3348, 3349, 3376, 3490, 3491, 3687, 3688. Must be used with sawcut connecting rods
Out-of-Frame Overhaul Kit IPDSteel™ Piston	OF1758/66FR	1	CPL#: 3348, 3349, 3376, 3490, 3491, 3687, 3688. Must be used with fractured connecting rods
Out-of-Frame Overhaul Kit IPDSteel™ Piston	OF2023/66CR	1	CPL#: 3350, 3356, 3606, 3765, 3766, 3794, 3797, 3938, 3939, 4584, 4585, 4587, 4588. Must be used with sawcut connecting rods
Out-of-Frame Overhaul Kit IPDSteel™ Piston	OF2023/66FR	1	CPL#: 3350, 3356, 3606, 3765, 3766, 3794, 3797, 3938, 3939, 4584, 4585, 4587, 4588. Must be used with fractured connecting rods
Out-of-Frame Overhaul Kit IPDSteel™ Piston	OF2080/66CR	1	CPL#: 3657, 3719, 3724, 3937, 4583, 4586. Must be used with sawcut connecting rods
Out-of-Frame Overhaul Kit IPDSteel™ Piston	OF2080/66FR	1	CPL#: 3657, 3719, 3724, 3937, 4583, 4586. Must be used with fractured connecting rods
PISTON KITS			
Piston Kit	2881758	6	APR piston and APR liner must be used together
Piston Kit	2882023	6	APR piston and APR liner must be used together
Piston Kit	2882080	6	APR piston and APR liner must be used together
CYLINDER LINER KIT			
Liner Kit	4376168	6	APR piston and APR liner must be used together
VALVETRAIN			
Valve, Exhaust	4101454		20 degree
Valve, Intake	4965868		20 degree
Valve Guide	4026657		
Valve Lock	3680883		
Valve Seat Insert - Intake	3679537		
Valve Seat Insert - Intake	3679659		Cobalt based with Stellite
Valve Seat Insert - Exhaust	3104445		
Valve Spring	3679551		
Valve Stem Seal	4356366		
ENGINE BEARINGS			
Main Bearing Set, Std	3800298	1	Standard
Main Bearing Set, 0.25mm	4089845	1	0.25mm
Rod Bearing, Std	2882087	6	For fractured connecting rods
Rod Bearing, Std	4089405	6	Standard for drilled, non-drilled rods & sawcut rods
Rod Bearing, 0.25mm	4090016	1	0.25mm, for drilled, non-drilled, & sawcut rods (1 kit per engine)
Cam Bushing	3685690	7	
GASKETS			
Gasket Set, Lower	2881766	1	
Gasket Set, Upper	4376104	1	
Gasket, Oil Pan	4026684	1	
Gasket Connection	3684338	1	
Seal, O-Ring	3678756	1	Oil pick up tube o-ring
MISCELLANEOUS			
APR Piston Installation Tool	5299339	1	For use with APR cylinder liner
Water Pump	4089908	1	
Water Pump	4089910	1	