



IPD Differentiation: **IPDStyle™ 1-2-3 Gasket Sets**

IPDStyle Heavy-Duty Gaskets are designed for high performance in heavy-duty applications, using some of the best premium-type materials available in the gasket industry, so that you realize true... **Savings Without Risk!**

Advantages:

- Innovative, real-world gasket set solutions.
- Premium specification “heavy-duty” materials selected for each specific application
- Premium quality packaging
- Significant savings and convenience over OE gasket sets.

IPD QUALITY SOLUTIONS

IPD has many years of successful experience with heavy-duty gasket designs/solutions. Each IPDStyle 1-2-3 set consolidates related components to help you to complete an overhaul, all-in-one convenient part number (order one part number versus many OE sets). IPD offers

- Out-of-Frame Sets (part number ends in a 1)
- In-Frame OH Sets (part number ends in a 2)
- Multiple Cylinder Head Sets (part numbers ends in a 3)

IPD QUALITY MATERIALS

IPD selects specific gasket materials for each application, unlike some other aftermarket suppliers/repackagers that cut costs by using fewer/cheaper materials for many applications. IPD knows that Diesel and Natural Gas engines are subject to extreme conditions. Many aftermarket competitors compromise the quality of their gaskets by using lighter duty materials not intended for industrial and heavy-duty applications. Lighter duty materials can cause reduced sealing capability, and in more extreme cases, lower engine performance and engine life. **Please be aware that different specification gasket materials are available under the same trade/brand names, and do not guarantee a proper specification match for each application.** IPD strives to use the correct gasket materials to ensure that each part number is properly specified for each application.

IPD QUALITY PACKAGING

IPD’s premium type gasket packaging ensures that all of the components are protected during shipping and handling. A variety of protective packing methods are utilized for the numerous components in each gasket set for added safety. Some lesser aftermarket sets, and even some OE sets, come with many unprotected components thrown loose in a box, which can result in components damage during shipping and handling.

IPD GASKET PERFORMANCE

Independent tests have shown IPD quality gasket set components to perform similarly to similar OE parts, and to significantly outperform two other aftermarket brands that were tested.

IPD GASKET MATERIALS

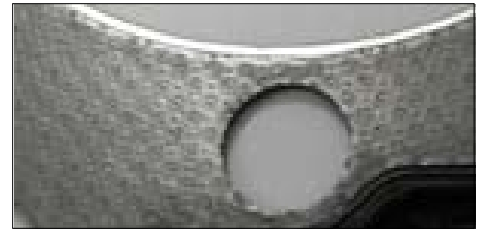
IPDStyle™ Heavy-Duty High Density Fiber/Metal Composite

- Constructed of two high-density aramid and synthetic copolymer rubber sheets that are chemically and mechanically fused to an expanded steel core.
- Excellent sealing performance, load retention, chemical resistance, and radial strength.
- Outstanding overall torque retention, crush and erosion resistance, compressive strength, sealability, and temperature resistance.



IPDStyle™ Heavy-Duty High Temperature Graphite

- Constructed of graphite (or graphite blend), mechanically bonded to a perforated tang steel core.
- Excellent cold flow and sealing characteristics.
- Used in such applications as cylinder head and manifold gaskets, combines well with fire rings to improve performance in high pressure environments.



IPDStyle™ Heavy-Duty High Temperature Compressed Fiber

- This material combines a unique synthetic fiber matrix and synthetic copolymer rubber.
- Excellent sealing and torque retention properties.



IPDStyle™ Heavy-Duty High Density

- This material combines a high density, controlled swell gasket material with natural and synthetic copolymer rubber binders.
- Excellent in heavy duty oil sealing applications such as diesel engine oil pans and front covers.



IPDStyle™ Heavy-Duty Compressible

- This material combines a compressible material with synthetic copolymer rubber.
- Excellent resistance to fuel, oil, coolant and water.



IPD QUALITY PACKAGING

IPD's premium type gasket packaging ensures that the sets are protected during shipping and handling. For example, IPD's Gasket Box design (shown below) includes several structural reinforcements for added strength and torsional resistance.



IPD GASKET PERFORMANCE

Independent tests have shown IPD quality gasket set components (shown below in green) to perform similarly to similar OE parts (shown below in yellow), and to significantly outperform two other aftermarket brands. Following are some details on the materials and performance of IPDStyle™ Gaskets.

Tensile Strength

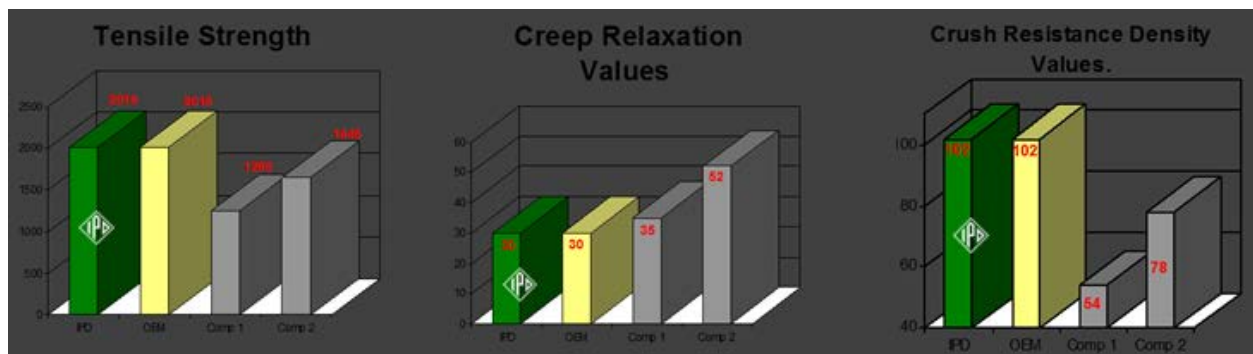
IPD's tensile strength matches OE, and measures up to 100% better than the weakest aftermarket example.

Creep Relaxation

IPD's creep relaxation value matches OE, and is significantly better than the two aftermarket examples.

Crush Resistance

IPD's crush resistance density value (lbs./cu. ft.) once again matches OE, and once again is better than the two aftermarket examples.



IPD ♦ Torrance, CA 90501 USA ♦ www.ipdparts.com

IPD is an ISO9001:2008 Certified Company

All information is believed to be accurate at time of printing. No guarantee of accuracy is made by IPD. Please consult your service and parts manual for detailed information. This is intended as a warning only, not a specification.