



IPD Products for Volvo D12 Engines



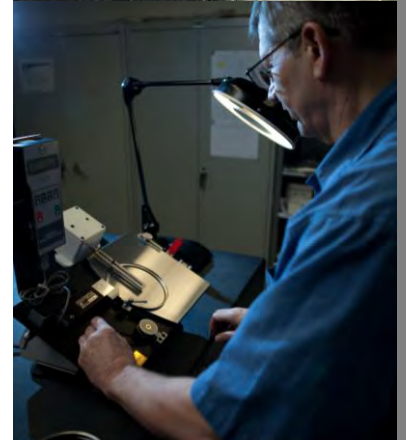
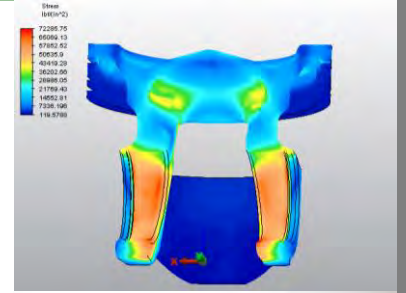
The Standard for Quality, Innovation, Service and Support Since 1955

SAVINGS WITHOUT RISK

IPD Parts.....Real Savings, Real Performance, Real Value

The D12 engine series has powered both on and off-highway engines for many years. IPD's heavy-duty engine components are designed and engineered by one of the most experienced engine parts manufacturers in the world, preferred by discriminating engine rebuilders worldwide, and backed by an industry-leading warranty.

- IPD is the **leading aftermarket supplier** of high quality repair & replacement parts for heavy-duty engines
- IPD parts are **designed and engineered in the USA** with specifications based on original equipment (OE) parts
 - **IPDSteel™** pistons are patented or patent-pending
 - IPD parts designed and engineered to meet or exceed OE level standards
- **60+ years of leadership in the aftermarket** (technical, engineering, design, manufacturing, and quality)
 - IPD is **ISO9001-2008 quality process certified**
- **Worldwide customer service & distribution network**
- **Industry leading warranty protection**
 - 2 Year / Unlimited Miles (on-highway applications)
 - 1 Year / 3,600 Hours (off-highway applications)



QUALITY CONTROL & ASSURANCE

Vehicle, machinery and equipment owners worldwide rely on IPD engine parts to provide **cost effective OE-level reliability, quality, and durability**. IPD parts are ready to meet the demands that D12 series engines typically endure. IPD's engineering, manufacturing, and quality processes ensure precision parts that are **cost effective, reliable and durable**. From precision metrological processes and parts specifications, to expert design and engineering, to process driven manufacturing and quality systems, to premium packaging and packing, to industry leading customer and technical support...IPD parts are your key to success.



IPD PRODUCT AVAILABILITY

IPD provides a wide range of quality/precision-engineered repair parts for the entire D12 series of engines, as follows:

- **Pistons & Pins**

- Special 2-piece articulated pistons with forged steel crowns (and aluminum skirt) for high temperature and pressure capability
- Proprietary phosphate piston coating for enhanced lubricity and corrosion protection (graphite skirt coating also included)
- Pins engineered to exceed OE tensile and yield strength

- **Cylinder Liners**

- Precision honed to minimize ring wear and oil consumption
- Induction hardened and roll burnished for strength/durability

- **Valvetrain**

- Valves made of special alloys for strength, and resistance to wear, and high temperatures
- Special alloys utilized in valve seats for corrosion and high heat wear resistance and hardness retention

- **Engine Bearings & Bushings**

- Main & connecting rod bearings engineered for high loads, fatigue strength, and cavitation resistance
- Special aluminum alloy utilized in cam bushings for high load performance and high fatigue properties
- Thrust Washers feature a bronze alloy with oil channels for improved anti-friction properties and high load capability

- **Cylinder Head Gasket**

- Zinc plated steel for enhanced corrosion resistance
- Stainless inserts with molded fluoroelastomer seals for durability and resistance to high temperatures and engine chemicals

- **IPD Heavy-Duty Gasket Sets**

- Premium materials for reliability/longevity/performance
- Cylinder Head Replacement Sets available for off-highway applications (haulers, loaders, excavators, etc.)
 - Innovative/optional Supplemental Gasket Sets also available (completes overhaul set)
- IPDStyle 1-2-3™ “complete” In-Frame Overhaul Gasket Sets available for on-highway applications
 - Bagged and marked sub-assemblies (such as Front, Upper, Lower, Fuel, Oil Cooler, Oil & Water Lines, Fuel, Turbo, etc.)



Please consult with IPD Customer Service or directly with IPD's extensive IPDNet™ on-line catalog (for IPD Authorized Distributors only) for specific Volvo D12 application parts information.



IP PARTS ENGINE APPLICATIONS

CATERPILLAR[®]

C-Series (C7, C9, C10, C12, C13, C15, C18, C27, C32)
3500 Series (3508/3512/3516/3524)
G3500 Series (G3508/G3512/G3516/G3520)
3400E Series (3406E/3408E/3412E)
3400 Series (3406/3408/3412)
G3400 Series (G3406/G3408/G3412)
3300 Series (3304/3306)
G3300 Series (G3304/G3306)
3200 Series (3204/3208)
3100 Series (3114/3116/3126/3176C/3196)
3000 Series (3064/3066)
300 Series (333/342/343/353/379/398/399)
G300 Series (G333/G342/G353/G379/G398/G399)

CUMMINS[®]

ISX/QSX & K19/KT19 Series

DETROIT DIESEL[®]

60 Series

WAUKESHA[®]

VHP Series (7042/7044)

VOLVO[®]

D12 Series

IPD brand quality products distributed by:



IPD[®]

23231 Normandie Ave
Torrance, California 90501 USA
+1 (310) 530-1900
+1 (310) 530-2708 Fax
+1 (310) 602-5399 Sales
www.ipdparts.com
sales@ipdparts.com

All manufacturers' names, numbers, symbols & descriptions are for reference only. It is not implied that any part is the product of the manufacturer. Caterpillar[®], Detroit Diesel[®], Cummins[®], Waukesha[®], & Teflon[®] are trademarks of their respective owners.